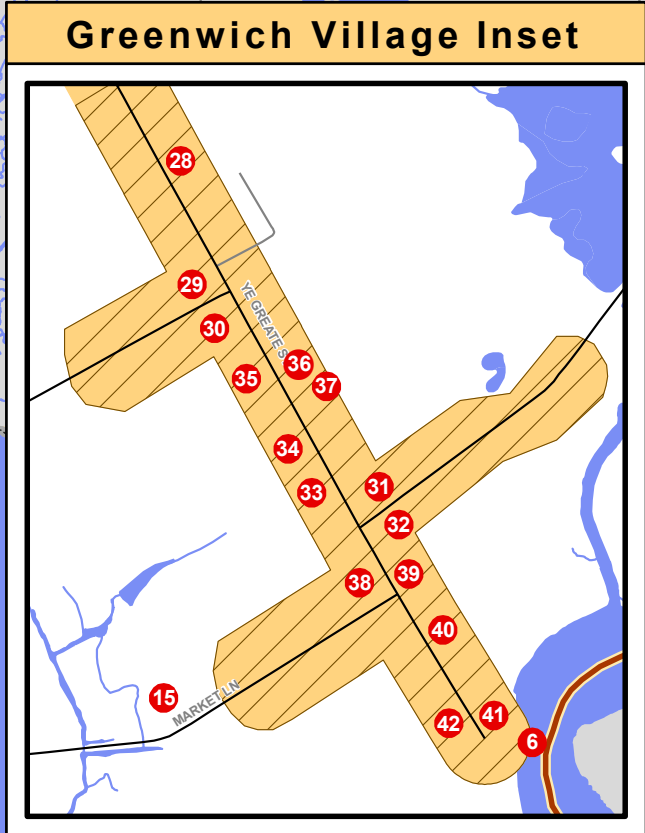
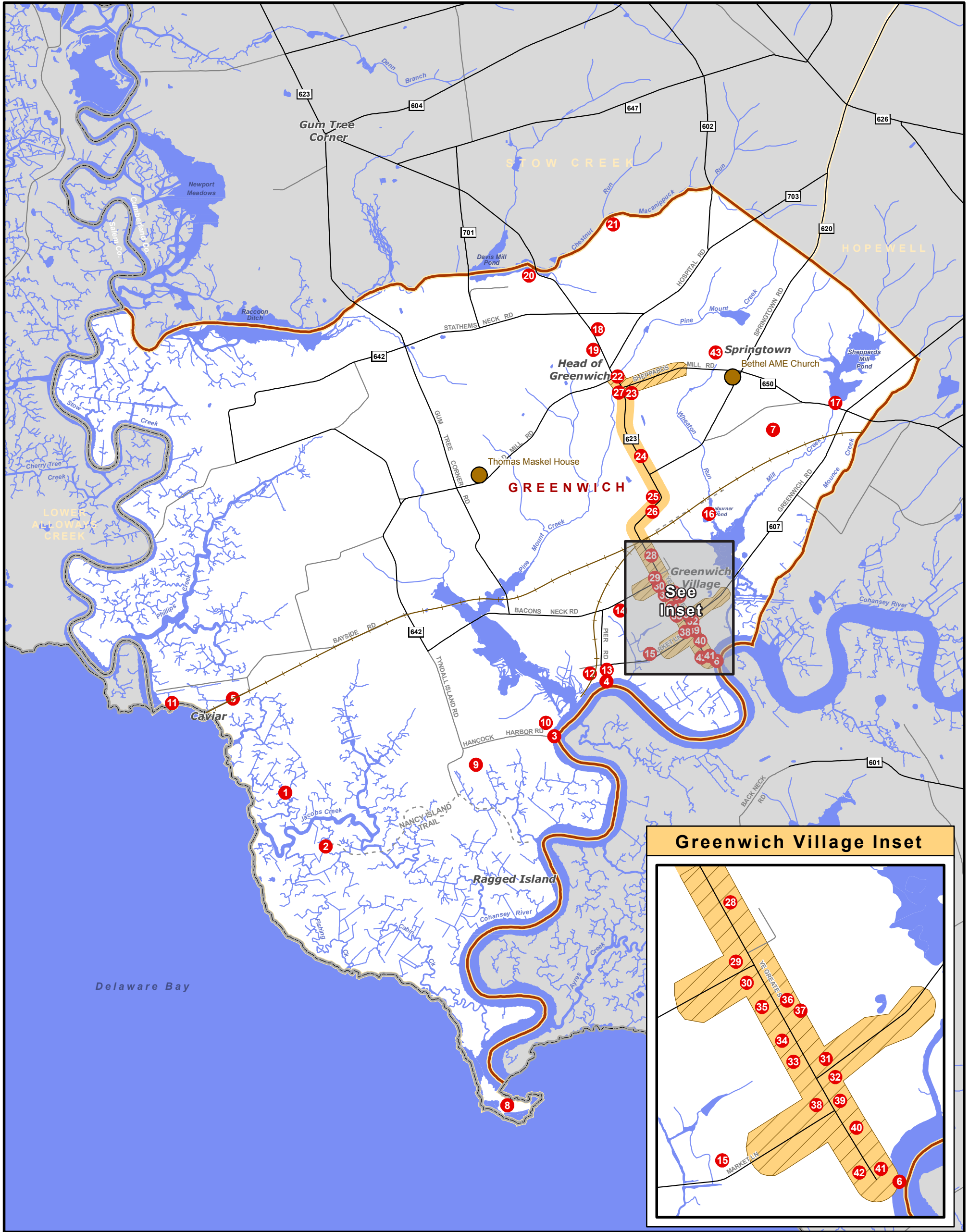


GREENWICH TOWNSHIP

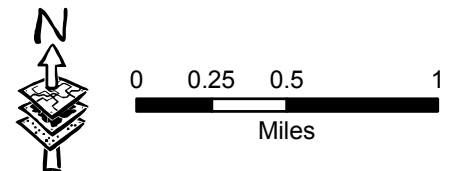
Map 17: Historical Resources and Cultural Resources (2006)



- Site on NJ & National Registers of Historic Places
- Greenwich Historic District (NJ & National Registers of Historic Places)
- Historic Resource
- Local Historic District

Historic Sites & Local Sites of Interest

1. Picnic Island	12. "Mother's Darling" Plaque	23. Presbyterian Church	34. Lummis Geneological Library
2. Nancy Island	13. Schooner Shipyard & Oyster Shucking House	24. Upper Friends Meeting House	35. Maritime Museum
3. Marina	14. Cucumber Magnolia - State Record Tree	25. Old Stone Schoolhouse	36. Gibbon House
4. Greenwich Piers	15. Bitternut Hickory - State Record Tree	26. Orthodox Friends Cemetery	37. Swedish Granary
5. Former rail line	16. Native American Monument	27. Old Presbyterian Cemetery & Original Church Site	38. Firehouse
6. Historic Ferry Crossing	17. Former mill site	28. Baptist Church & Cemetery	39. Site of St. Stephen's Episcopal Church
7. Tea Burner Farm	18. Bethel AME Cemetary on Ambury Hill	29. Wood Mansion	40. Lower Friends Meeting House
8. Cohansy Lighthouse Site	19. Former schoolhouse	30. Wood Store	41. Reeve Sheppard House
9. American Chestnut - State Record Tree	20. Former saw mill site	31. Prehistorical Museum	42. Watson's Tavern
10. Shad Sowl (Floating Cabin)	21. Former button mill site	32. Greenwich Post Office & Store	43. Former road
11. Monument to Goose Goslin	22. Former flax mill site	33. Tea Burners Monument	



Sources : NJDEP, NJDOT, DVRPC, NJSHPO, Cumberland County Planning Department. This map was developed using New Jersey Department of Environmental Protection Geographic Information System digital data, but this secondary product has not been verified by NJDEP and is not state-authorized.